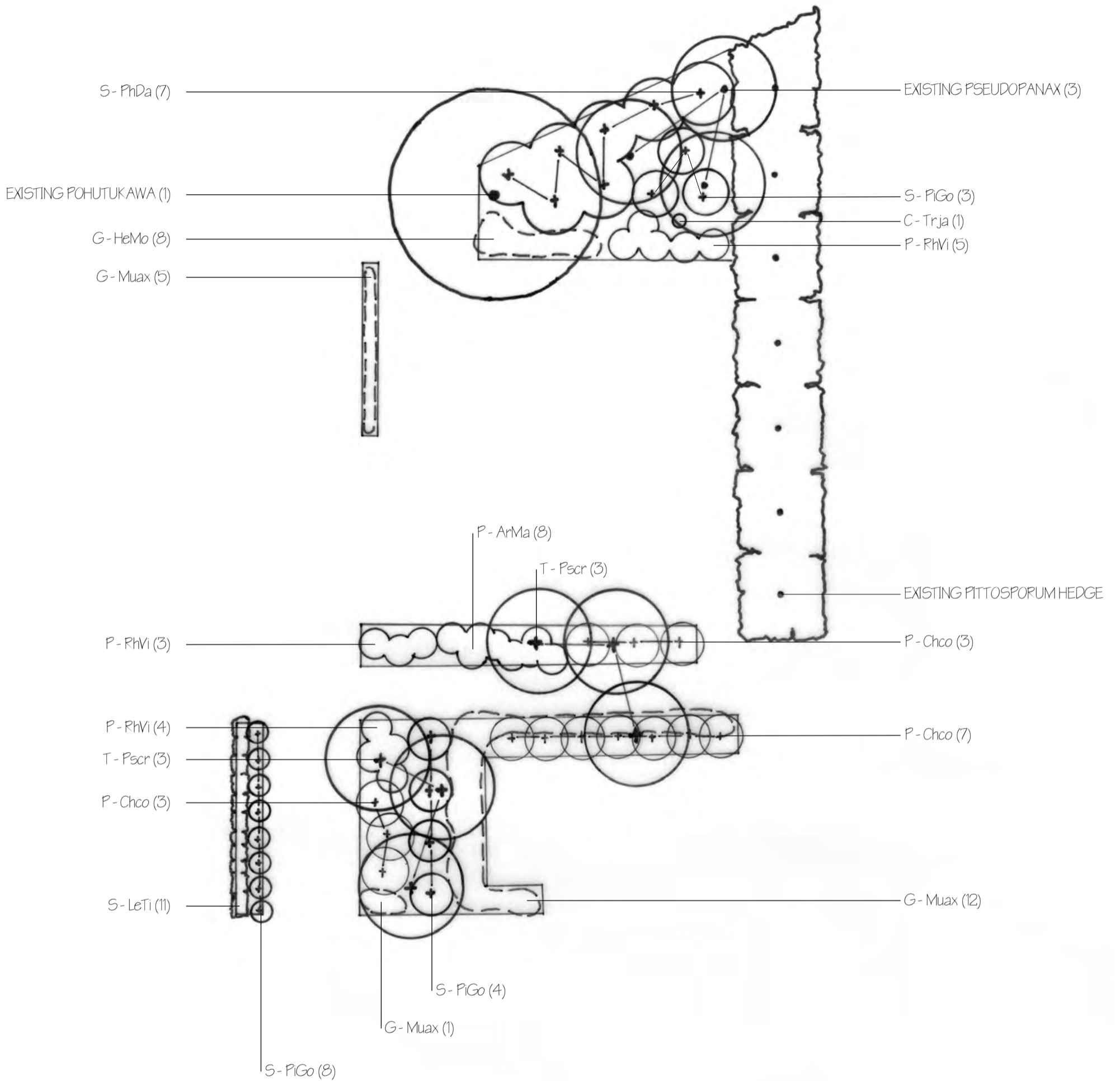


NOTES:

1. ARROWS INDICATE A CHANGE IN LEVEL (STEPS) MOVING IN AN UPWARD DIRECTION.
2. ALL BACKYARD RAISED GARDEN BEDS ARE TO BE 600MM ABOVE THE HEIGHT OF LOWER BOARDWALK LEVEL.
3. ALL PLANTS ARE SPECIFIED IN THE PLANTING PLAN.

Proposal Plan	Chris Anderson 021 345 6789 chris.anderson@landscapedesignandbuild.nz
Martin Garden 123 Ako St Palmerston North	Drawn: 12 Feb 2024
	Scale: 1:100 @ A3





NOTES:

1. BACKYARD RAISED GARDEN BED PLANTERS ARE FOR HERBS AND VEGETABLES SO NO PLANTS ARE SPECIFIED IN THIS PLANTING PLAN FOR THESE AREAS.

2. REFER TO PLANTING SCHEDULE FOR INTERPRETATION OF PLANT CODES.



Planting Plan Martin Garden 123 Ako St Palmerston North	Chris Anderson 021 345 6789 chris.anderson@landscapedesignandbuild.nz
	Drawn: 12 Feb 2024 Scale: 1:100 @ A3

Martin Garden

Planting Schedule

Code	Scientific name	Common names	Height and spread	Qty	Notes
Trees					
T-Pscr	<i>Pseudopanax crassifolius</i>	Horoeka, lancewood	12x3m	6	
Shrubs					
S-PhDa	<i>Phormium</i> 'Dark Delight'	Ornamental flax	1.5x1.5m	7	
S-LeTi	<i>Leptospermum</i> 'Tui'	Dwarf manuka	0.5x0.5m	11	
S-PiGo	<i>Pittosporum</i> 'Golf Ball'		1x1m	15	Trim to retain round form and desired size
Perennials					
P-Chco	<i>Chionochloa conspicua</i>	Hunangamoho snow grass	1.0x1.5m	13	
P-RhVi	<i>Rheum x hybridum</i> 'Victoria'	Rhubarb	0.8x1.0m	12	Plant at 0.75m centres
P-ArMa	<i>Arthropodium</i> 'Matapouri Bay'	Rengarenga, rock lily	0.6x0.6m	8	Plant at 0.5m centres
Ground covers					
G-HeMo	<i>Helleborus</i> 'Molly's White'	Hellebore 'Molly's White'	0.5x0.6	8	Plant at 0.5m centres
G-Muax	<i>Muehlenbeckia axillaris</i>	Creeping wire vine	0.2x1.0m	18	
Climbers					
C-Trja	<i>Trachelospermum jasminoides</i>	Star jasmine	-	1	Plant in front of focal point sculpture